

User's Manual
Of
PC104-3612
PC104-3613
PC104 LAN Module

May 2002
Version: 1.0
Part No.: PC104-3612
PC104-3613

Copyright

©Copyright 2001Nagasaki International Corp. The content of this publication may not be reproduced in any part or as a whole, transcribed, stored in a retrieval system, translated into any language, or transcribed in any form or by any means, electronic, mechanical, magnetic etc. or otherwise without the prior written permission of Nagasaki International Corp.

Disclaimer

NAGASAKI IPC makes no representation of warranties with respect to the contents of this publication. In an effort to continuously improve the product and add features, FablATech reserves the right to revise the publication or change specifications contained in it from time to time without prior notice of any kind from time to time.

NAGASAKI IPC shall not be reliable for technical or editorial errors or omissions, which may occur in this document. FablATech shall not be reliable for any indirect, special, incidental or consequential damages resulting from the furnishing, performance, or use of this document.

Trademarks

Trademarks, brand names and products names mentioned in this publication are used for identification purpose only and are the properties of their respective owners.

Technical Support

If you have problems or difficulties in using the system board, or setting up the relevant devices, and software that are not explained in this manual, please contact our service engineer for service, or send email to naga.saki@msa.hinet.net.

Returning Your Board For Service & Technical Support

If your board requires servicing, contact the dealer from whom you purchased the product for service information. You can help assure efficient servicing of your product by following these guidelines:

- ❑ A list of your name, address, telephone, facsimile number, or email address where you may be reached during the day
- ❑ Description of you peripheral attachments
- ❑ Description of you software (operating system, version, application software, etc.) and BIOS configuration
- ❑ Description of the symptoms (Extract wording any message)

For updated BIOS, drivers, manuals, or product information, please visit us at www.nagasaki.com.tw

Table of Content

| | |
|---|-----------|
| PC104-3612/13 PC/104LAN Module User's Manual | i |
| Chapter 1 Introducing the PC104-3612/13 System Board | 1 |
| Overview | 1 |
| Series Comparison Table | 1 |
| Layout | 3 |
| Specifications..... | 4 |
| Packing List..... | 5 |
| Chapter 2 Hardware Installation | 6 |
| Before Installation..... | 6 |
| Hardware Features..... | 7 |
| CN4 & J1: RJ45 LAN /Adapter Connector with LED indicators | 8 |
| PC104-3613 SW2 & JP1: Selecting address & IRQ | 9 |
| PC104-3612 SW1: Selecting boot ROM Memory address | 10 |
| CN5, CN6: PC/104 Connector | 11 |
| Chapter 3 Driver and Utility | 14 |
| PC104-3612 LAN Driver & Utility..... | 14 |
| PC104-3613 LAN Driver Installation Under WIN98 | 14 |
| PC104-3613 LAN Driver Setup | 18 |
| Chapter 4 Technical Reference | 20 |
| Trouble Shooting | 20 |
| Appendix..... | 22 |
| Dimension..... | 22 |

Chapter 1 Introducing the PC104-3612/13 System Board

Overview

The PC104-3613 is a PC/104 10/100-BaseTX LAN module. The PC104-3612 is a PC/104 10-BaseT LAN module. This user's manual provides information on the physical features and installation of the PC104-3612/13.

Series Comparison Table

| Model | PC104-3613 | PC104-3612 |
|-----------------------|---------------|---------------|
| Chipset | SMsC 91C113 | DM9008 |
| Ethernet 10 Mbps | YES | YES |
| Ethernet 100 Mbps | YES | |
| LAN Boot Rom (Option) | | YES |
| Board Size | 90.2mm x 96mm | 90.2mm x 96mm |



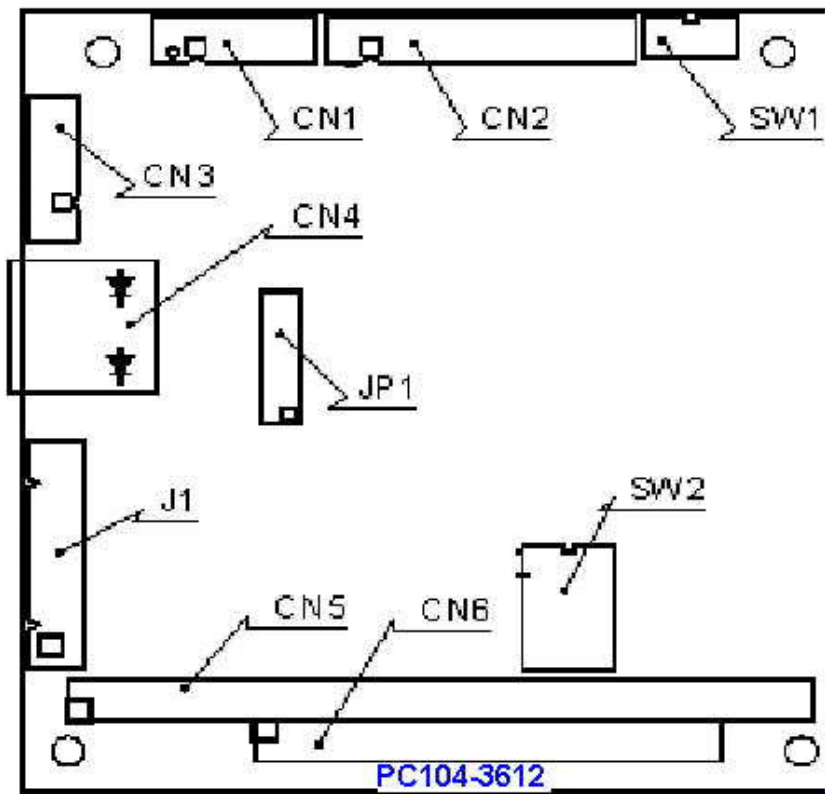
PC104-3612



PC104-3613

Layout

PC104-3612 and PC104-3613



- Stack through PC/104 bus.
- 10Base-T, DM9008 chipset with RJ-45 connector. (PC104-3612)
- 16 addresses selectable and 8 interrupt level selectable with software configuration. (PC104-3612)
- 10/100-BaseTX, SMsC 93C113 chipset with RJ-45 connector. (PC104-3613)
- 8 addresses selectable and 8 interrupt level selectable. (PC104-3613)
- On-Board PLCC socket for LAN boot-ROM. (PC104-3612/13)
- Operating temperature 0 degree C to 60 degree C.
- Up to 95% Humidity non-condensing.
- Power Req.: +5v only 0.4A maximum.
- PC/104 form-factor (90x96mm/3.6" x3.8").

Packing List

Upon receiving the package, verify the following things. Should any of the mentioned happens, contact us for immediate service.

- Unpack and inspect the PC104-3612/13 package for possible damage that may occur during the delivery process.
- Verify the accessories in the package according to the packing list and see if there is anything missing or incorrect package is included.
- If the cable(s) you use to install the PC104-3612/13 is not supplied from us, please make sure the specification of the cable(s) is compatible with the PC104-3612/13 system board.

Note: after you install the PC104-3612/13, it is recommended that you keep the diskette or CD that contains drivers and document files, document copies, and unused cables in the carton for future use.

The following lists the accessories that may be included in your PC104-3612/13 package. Some accessories are optional items that are only shipped upon order.

- One PC104-3612/13 PC/104 LAN board
- 6-Pin or 10-pin LAN adapter cable with transfer board.
- One compact disc containing manual file in PDF format and necessary drivers and utilities

Chapter 2 Hardware Installation

This chapter introduces the PC104-3612/13 board connectors and then guides you to apply them for field application.

Before Installation

Before you install the PC/104 LAN board, make sure you follow the following descriptions.

1. Before removing the board from its anti-static bag, wear an anti-static strap to prevent the generation of Electricity Static Discharge (ESD). The ESD may be created from human body that touches the board. It may do damage to the board circuit.
2. Once you have installed the LAN board into the CPU's PC/104 bus, you can start connect internal cables. The internal cables are wire leads with plastic female connector that attached to the board's connectors. The LAN board's connectors have many numbers of pins and are the points of contact between the CPU card and other parts of the computer.
3. When you connect the LAN connectors, be careful with the pin orientations.

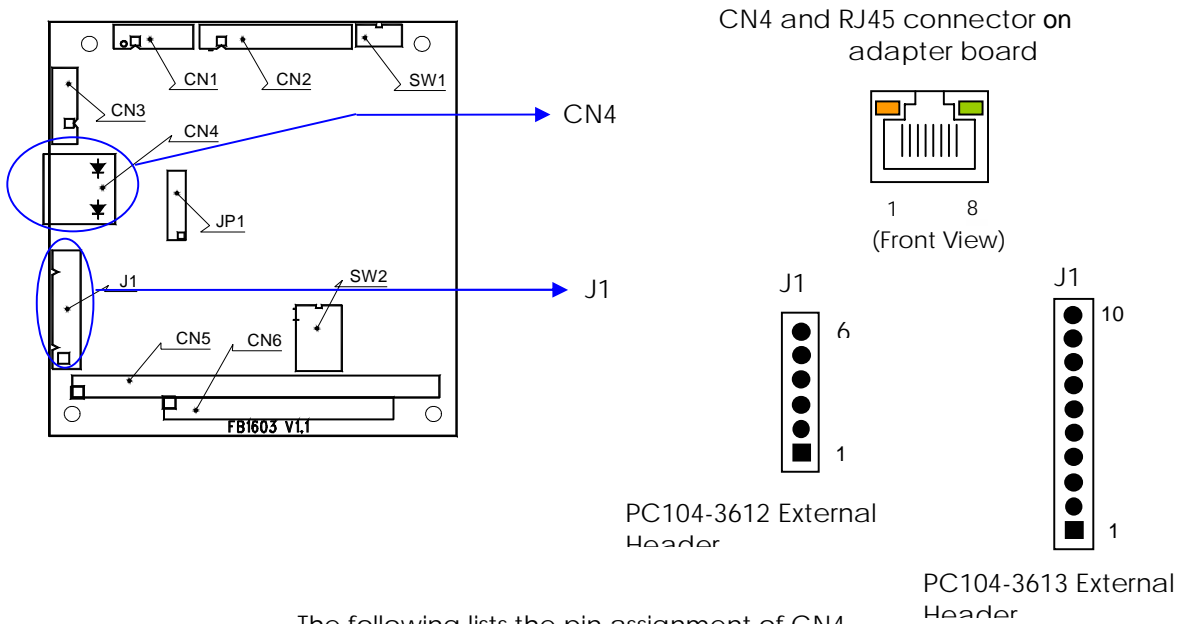
Hardware Features

The following lists the connectors and jumpers to install the PC104-3612/13.

| Item | Description |
|------|---|
| CN4 | LAN Connector and LED Indicators |
| CN5 | 64 pin PC/104 connector bus A & B |
| CN6 | 40 pin PC/104 connector bus C & D |
| J1 | LAN 6/10-pin external header for LAN board |
| SW1 | Firmware Mapping Address Select (PC104-3612) |
| SW2 | Base I/O Address & Firmware Mapping Address Select (PC104-3613) |

CN4 & J1: RJ45 LAN /Adapter Connector with LED indicators

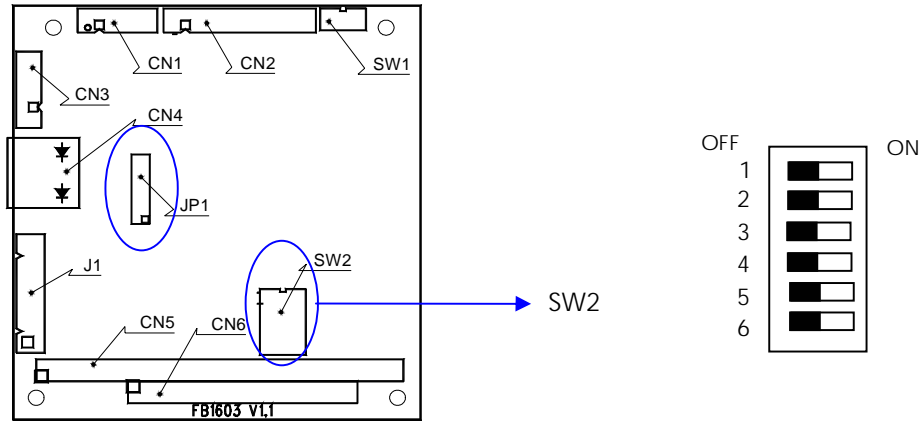
CN4 is a RJ45 connector with 2 LEDs for LAN. The left side LED (green) indicates data is being accessed and the right side LED (orange) indicates on-line status. (On indicates on-line and off indicates off-line) J1 provide twist-pair signals of external LAN port, if you use external additional adapter board with cable. The following table lists the pin assignments of CN4 and RJ45 connector on the LAN adapter board:



The following lists the pin assignment of CN4.

| CN4 | Signal | CN4 | Signal |
|-----|--------|-----|--------|
| 1 | TPTX+ | 5 | FBG1 |
| 2 | TPTX - | 6 | TPRX - |
| 3 | TPRX+ | 7 | FBG2 |
| 4 | FBG1 | 8 | FBG2 |

PC104-3613 SW2 & JP1: Selecting address & IRQ

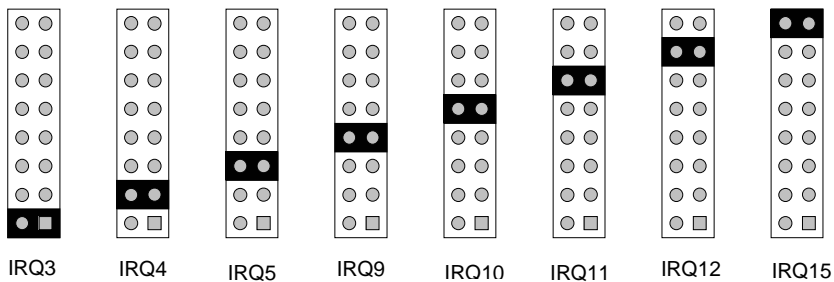


The following lists the switch settings of LAN address.

| SW2-1 | SW2-2 | SW2-3 | Mapping I/O Address | Remark |
|--------------------|-------|-------|---------------------|---------|
| Off | Off | Off | 300H | Default |
| Others is reserved | | | | |

SW2-5 and SW2-6 are use to select mapping address of on-board boot-ROM socket.

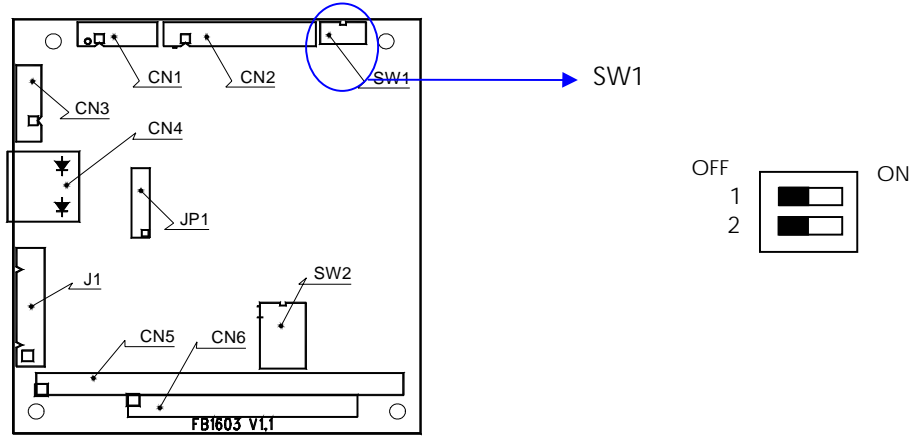
| SW2-5 | SW2-6 | Mapping Address | Remark |
|-------|-------|-------------------|---------|
| Off | Off | None (Disable) | Default |
| On | Off | C800H:0 (8Kbytes) | |
| Off | On | C800H:0 (8Kbytes) | |
| On | On | C800H:0 (8Kbytes) | |



Factory Preset

Note: When assign IRQ# selected the system BOIS CMOS SET UP "PLUG AND PLAY" resource IRQ# must set to ISA

PC104-3612 SW1: Selecting boot ROM Memory address

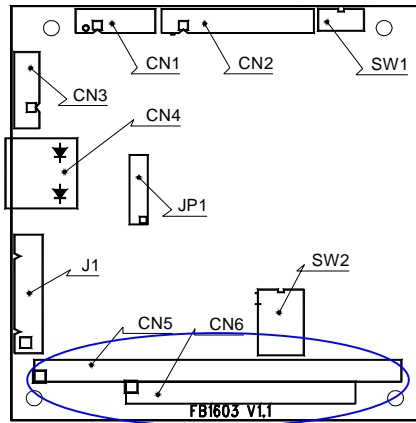


SW1 is use to select mapping address of on-board boot-ROM socket.

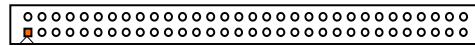
| SW1-1 | SW1-2 | Mapping Address | Remark |
|-------|-------|-------------------|---------|
| Off | Off | None (Disable) | Default |
| On | Off | C800H:0 (8Kbytes) | |
| Off | On | C800H:0 (8Kbytes) | |
| On | On | C800H:0 (8Kbytes) | |

CN5, CN6: PC/104 Connector

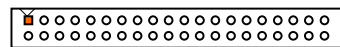
Locate the PC/104 bus connector on the PC104-3612/13 LAN module and its counterpart on the CPU card or board.



CN5 – BUS A & B



CN6 – BUS C & D



PC/104 A&B Pin

| Pin | Signal | Pin | Signal | Pin | Signal | Pin | Signal |
|-----|--------|-----|--------|-----|-----------|-----|--------|
| A1 | -IOCHK | A17 | SA14 | B1 | Ground | B17 | -DACK1 |
| A2 | SD7 | A18 | SA13 | B2 | RSTDRV | B18 | DRQ1 |
| A3 | SD6 | A19 | SA12 | B3 | +5V | B19 | -REFSH |
| A4 | SD5 | A20 | SA11 | B4 | IRQ9 | B20 | BUSCLK |
| A5 | SD4 | A21 | SA10 | B5 | -5V (*1) | B21 | IRQ7 |
| A6 | SD3 | A22 | SA9 | B6 | DRQ2 | B22 | IRQ6 |
| A7 | SD2 | A23 | SA8 | B7 | -12V (*1) | B23 | IRQ5 |
| A8 | SD1 | A24 | SA7 | B8 | -ZWS | B24 | IRQ4 |
| A9 | SD0 | A25 | SA6 | B9 | +12V | B25 | IRQ3 |
| A10 | IORDY | A26 | SA5 | B10 | Key1 | B26 | -DACK2 |
| A11 | AEN | A27 | SA4 | B11 | -MEMW | B27 | TC |
| A12 | SA19 | A28 | SA3 | B12 | -MEMR | B28 | ALE |
| A13 | SA18 | A29 | SA2 | B13 | -IOW | B29 | +5V |
| A14 | SA17 | A30 | SA1 | B14 | -IOR | B30 | OSC |
| A15 | SA16 | A31 | SA0 | B15 | -DACK3 | B31 | Ground |
| A16 | SA15 | A32 | Ground | B16 | DRQ3 | B32 | Ground |

PC/104 C& D Pin

| Pin | Signal | Pin | Signal | Pin | Signal | Pin | Signal |
|-----|--------|-----|--------|-----|----------|-----|---------|
| C1 | GND | C11 | MEMW# | D1 | Ground | D11 | -DACK#5 |
| C2 | SBHE | C12 | SD8 | D2 | MEMCS16# | D12 | DREQ5 |
| C3 | LA23 | C13 | SD9 | D3 | IOCS16# | D13 | DACK#6 |
| C4 | LA22 | C24 | SD10 | D4 | IRQ10 | D14 | DREQ6 |
| C5 | LA21 | C25 | SD11 | D5 | IRQ11 | D15 | DACK#7 |
| C6 | LA20 | C26 | SD12 | D6 | IRQ12 | D16 | DREQ7 |
| C7 | LA19 | C27 | SD13 | D7 | IRQ15 | D17 | VCC |
| C8 | LA18 | C28 | SD14 | D8 | IRQ14 | D18 | MASTER# |
| C9 | LA17 | C29 | SD15 | D9 | DACK#0 | D19 | GND |
| C10 | MEMR# | C20 | KEY | D10 | DREQ0 | D20 | GND |

Chapter 3 Driver and Utility

The PC104-3612/13 provides a CD ROM includes the manual files (a complete manual file) and the required utility files.

PC104-3612 LAN Driver & Utility

Step 1: To install the LAN utility, insert the CD ROM into the CD ROM device, and enter DRIVER>LAN>DM9008. If your system is not equipped with a CD ROM device, copy the LAN driver from the CD ROM to a 1.44" diskette.

Step 2 Execute install.exe file.

Note: In the DM9008 directory, an A.EXE file is included to provide installation information and driver.

PC104-3613 LAN Driver Installation Under WIN98

The following section describes the procedure installation WINDOWS 98 drivers for PC104-3613.

1. Under Windows 98, Click Control Panel, then Add New Hardware.



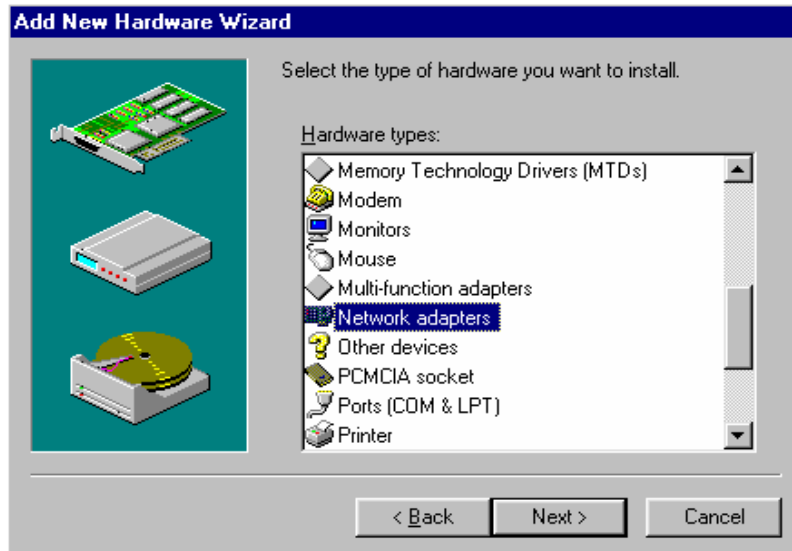
- Windows will start to search for new drivers for the Ethernet controllers, In the Add New Hard Wizard, click Next button.



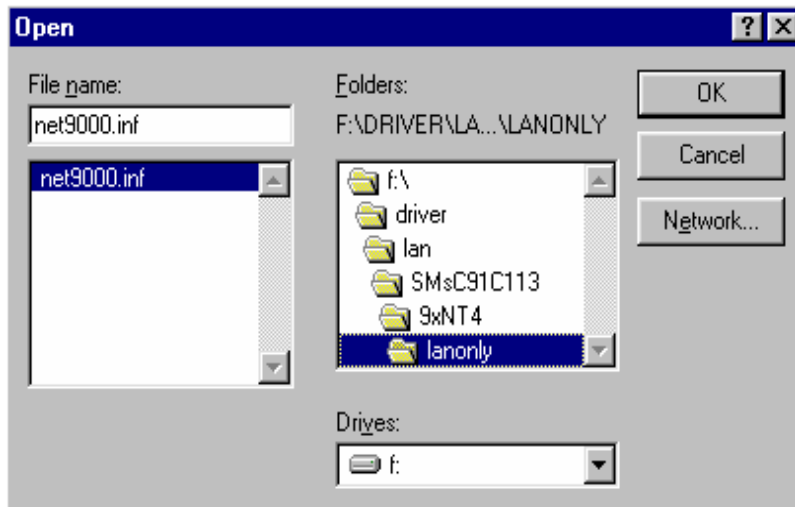
- Now, Select No, I want to select the hardware form list, and click Next button.



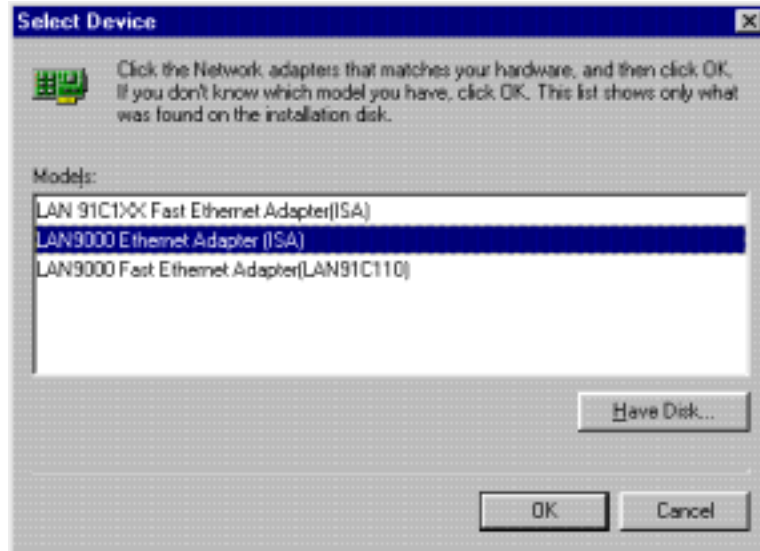
4. Select Network adapters and click Next button.



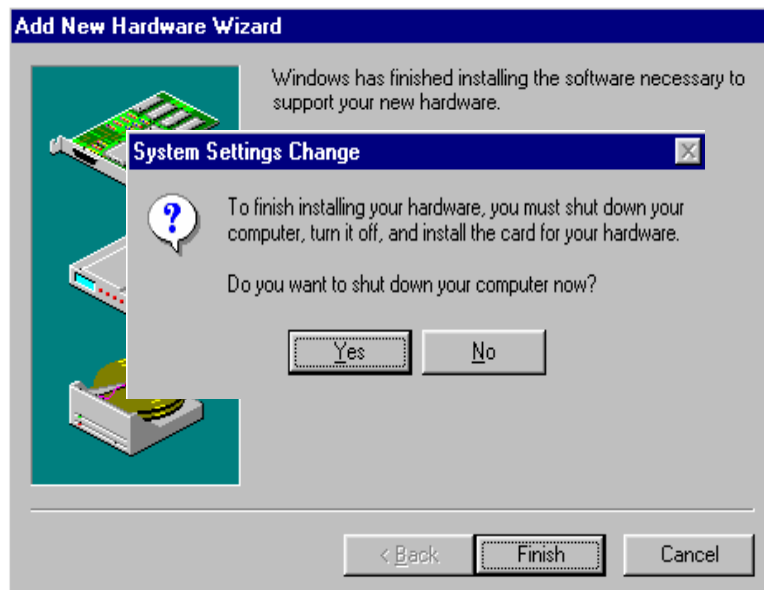
5. Select specify the path of the drivers and then click next button.



6. Select LAN9000 Ethernet Adapter (ISA) device then click OK.

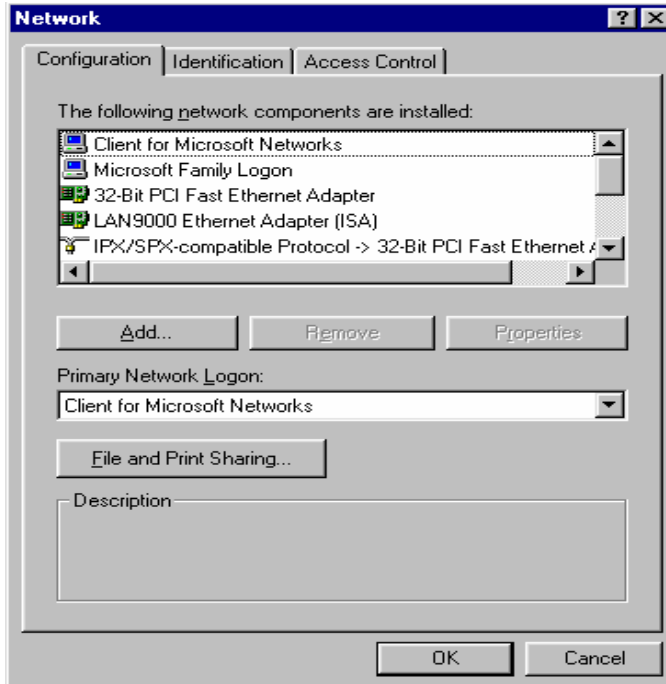


7. After files copying is done, click Finish and restart the computer when prompted.

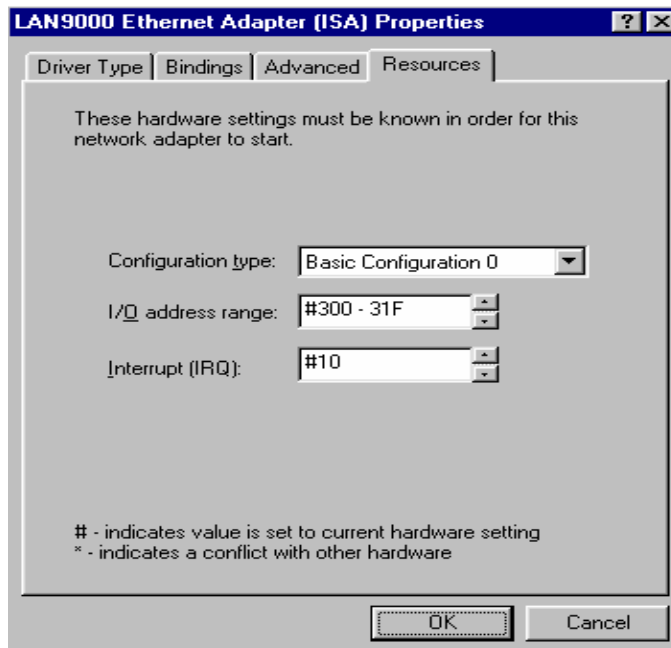


PC104-3613 LAN Driver Setup

1. Under Windows 98, Click Control Panel, then click Network, then click select LAN9000 Ethernet Adapter (ISA).



2. Select Resources then can configuration Interrupt (IRQ) and click OK.



This section outlines the errors that may occur when you operate the system, and also gives you the suggestions on solving the problems.

Topic include:

- Trouble Shooting

Trouble Shooting

The following information informs the error beep code and troubleshooting. Please adjust your systems according to the messages below. Make sure all the components and connectors are in proper position and firmly attached. If the errors still exist, please contact with your distributor for maintenance.

If you have problems after installation, check the following to determine the cause.

- Ensure that all cable are properly connected, all plugs are firmly seated in their sockets. Check to see if the LAN is firmly seated in its bus PC/104. Be sure it is not making contact with any other cards in the system.
- Check the length and rating of connecting cables.
- Check CMOS SETUP "PCI PLUG AND PLAY " RESOURCE IRQ Ensure that must set to ISA settings. Like below:

If you LAN board IRQ (JP1) selected to IRQ10 the under CMOS SEUP PCI PLUG AND PLAY "IRQ-10 assigned to: Legacy ISA"

```
ROM PCI/ISA BIOS (2A434F19)
PNP/PCI CONFIGURATION
AWARD SOFTWARE, INC.

PNP OS Installed      : No
Resources Controlled By : Manual
Reset Configuration Data : Disabled

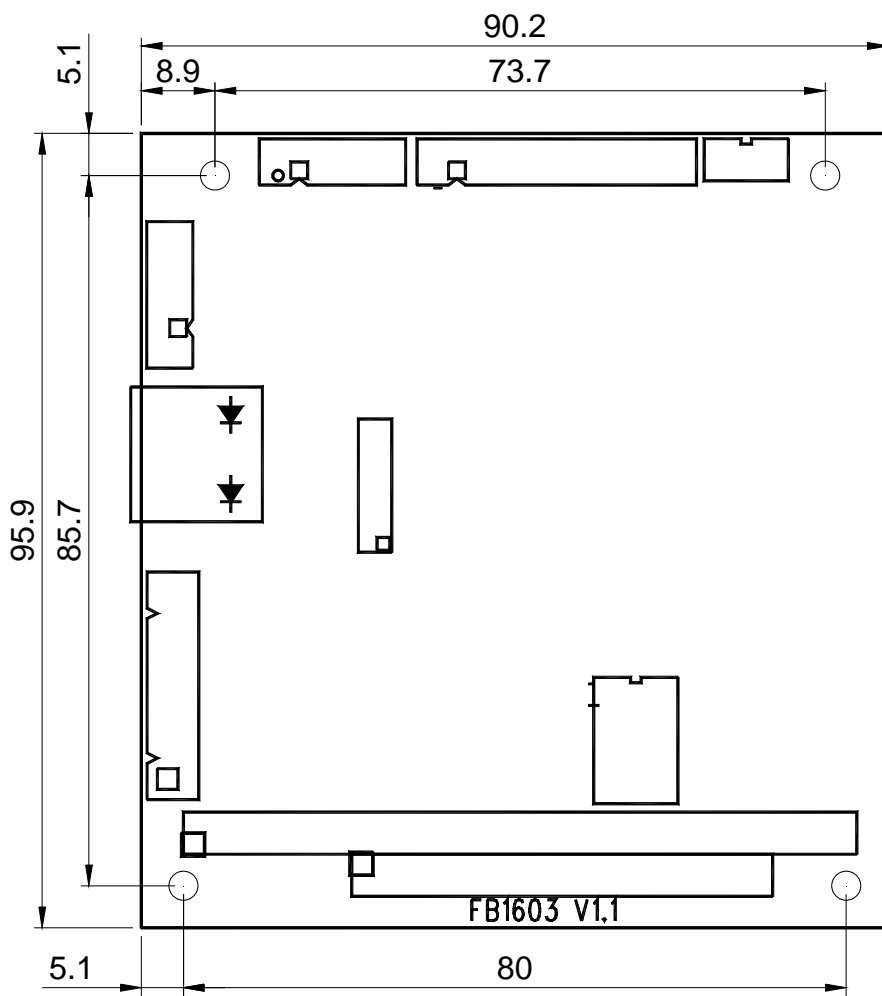
IRQ-3 assigned to : Legacy ISA
IRQ-4 assigned to : Legacy ISA
IRQ-5 assigned to : PCI/ISA PnP
IRQ-7 assigned to : PCI/ISA PnP
IRQ-9 assigned to : PCI/ISA PnP
IRQ-10 assigned to : Legacy ISA
IRQ-11 assigned to : Legacy ISA
IRQ-12 assigned to : PCI/ISA PnP
IRQ-14 assigned to : PCI/ISA PnP
IRQ-15 assigned to : PCI/ISA PnP
DMA-0 assigned to : PCI/ISA PnP
DMA-1 assigned to : PCI/ISA PnP
DMA-3 assigned to : PCI/ISA PnP
DMA-5 assigned to : PCI/ISA PnP
DMA-6 assigned to : PCI/ISA PnP
DMA-7 assigned to : PCI/ISA PnP

PCI IRQ Activated By : Level
Used MEM base addr  : N/A

ESC : Quit      | |←→ : Select Item
F1  : Help     | PU/PD/+/- : Modify
F5  : Old Values (Shift)F2 : Color
F6  : Load BIOS Defaults
F7  : Load Setup Defaults
```

If checking these items does not locate the problem, there may be a malfunction of the computer system, display monitor or the LAN. Consult you computer dealer for assistance in locating the problem

Dimension



Unit: mm